

# SEMI-CLOISSONNE



Semi-cloisonné also called Synthetic enamel, Eploa, Imitation enamel. It is a modern substitute for hard enamel.

The process is similar to cloisonné ( Hare Enamel ) except that a special liquid epoxy material is utilized to provide colors instead of the cloisonné color. Colors can be matched to Pantone Colors (PMS) in imitation enamel.

Imitation enamel replaced the cloisonné, because of similarity to hard enamel material, but shinier, lower cost, fast delivery time and much more colors to choose from.

Imitation enamel surface is flat and smooth, Basically it feels in the same level with your fingers slightly raised with logo or text, and color design ,and this emblem of the rough feeling of baking significantly different from soft enamel.

# SEMI-CLOISONNE BADGES



# SOFT ENAMEL



Soft enamel is another commonly substitute for the hard enamel and synthetic enamel. It differs in the color technique.

The colors are not completely filled in the recessed areas and the metal borders are much more visible. It fired at low heat to seal the colors and provide a lustrous appearance.

Both soft enamel and hard enamel are manufactured using the same procedure, but there is a slight variation in the drying process of the applied paint. Once the paint is applied, instead of subjecting it to intense pressure and temperature (as done for the manufacture of hard enamel pins), these pins are simply air-dried. A current of air is allowed to fall into the wet paint and hence the paint will dry! This is the functional difference between soft enamel pins and hard enamel pins, The difference does not end merely with the drying process.

# SOFT ENAMEL BADGES



# OFFSET PRINTING



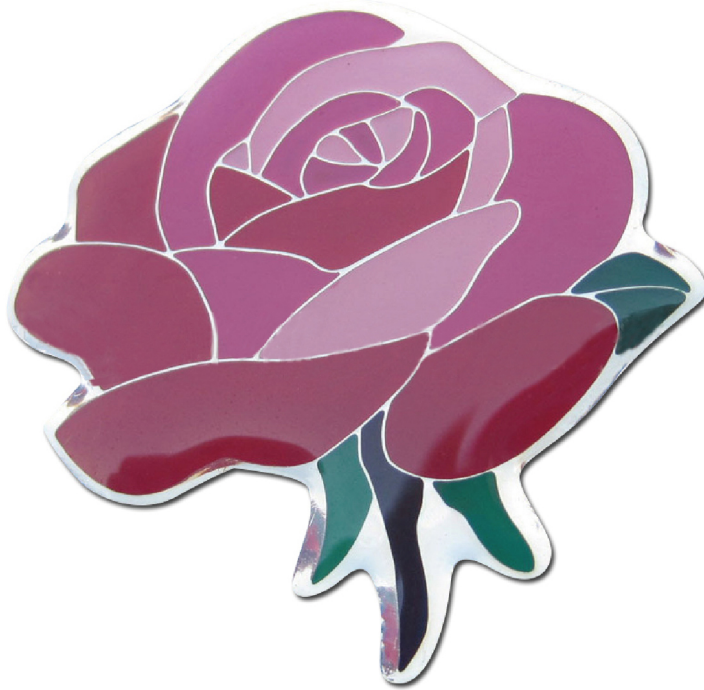
Offset printing is the workhorse of printing. Almost every commercial printer does it. But the quality of the final product is often due to the guidance, expertise and equipment provided by the printer.

Principle of process: ink and water don't mix. Images (words and art) are put on plates, which are dampened first by water, then ink. The ink adheres to the image area, the water to the non-image area. Then the image is transferred to a rubber blanket, and from the rubber blanket to paper. That's why the process is called "offset" -- the image does not go directly to the paper from the plates, as it does in gravure printing.

# OFFSET PRINTING BADGES



# PHOTO ETCHED



---

Etching is a "chemical " process. It is also known as Photo Chemical Machining (PCM) and Photo Chemical Milling.

The material is dissolved when immersed in a chemical solution. It is an exceptional manufacturing process that produces the most intricate, burr free, stress free, high precision profiles in a wide range of metals. One advantage of this procedure is that it makes the resulting product very difficult to reproduce.

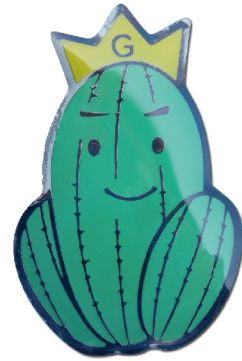
Additionally, photo etching makes both the product and its design more flexible. Usually , we use 0.3mm to 0.8mm thickness brass

---

# PHOTO ETCHED BADGES



PE-1



PE-2



PE-3



PE-4



PE-5



PE-6

# DIE STRUCK/STAMPING



It is a process that Die Struck into the brass to form a design.

Die struck (or Stamping) includes a variety of sheet-metal forming manufacturing processes, such as punching using a machine press or stamping press, blanking, embossing, bending, flanging, and coining. This could be a single stage operation where every stroke of the press produce the desired form on the sheet metal part, or could occur through a series of stages. The process is usually carried out on sheet metal.

Usually, we offer brass , iron etc.

# COLLECTIBLE COINS



CO-1



CO-2



CO-3



CO-4



CO-5



CO-6



CO-7



CO-8



CO-9



CO-10



CO-11



CO-12



CO-13



CO-14



CO-15



CO-16



CO-17



CO-18



CO-19



CO-20

# METAL COASTER



MC-21



MC-22



MC-23



MC-24



MC-25



MC-26



MC-27



MC-28



MC-29



MC-30



MC-31



MC-32



MC-33



MC-34



MC-35



MC-36



MC-37



MC-38



MC-39



MC-40

# MEDALS



ME-41



ME-42



ME-43



ME-44



ME-45



ME-46



ME-47



ME-48



ME-49



ME-50



ME-51



ME-52



ME-53



ME-54



ME-55



ME-56



ME-57



ME-58



ME-59



ME-60

# DOG TAG



DT-61



DT-62



DT-63



DT-64



DT-65



DT-66



DT-67



DT-68



DT-69



DT-70



DT-71



DT-72



DT-73



DT-74



DT-75



DT-76



DT-77



DT-78



DT-79



DT-80

# CUFFLINKS



CU-81



CU-82



CU-83



CU-84



CU-85



CU-86



CU-87



CU-88



CU-89



CU-90



CU-91



CU-92



CU-93



CU-94



CU-95



CU-96



CU-97



CU-98



CU-99



CU-100

# TIE CLIP



TC-101



TC-102



TC-103



TC-104



TC-105



TC-106



TC-107



TC-108



TC-109



TC-110



TC-111



TC-112



TC-113



TC-114

# BOTTLE STOPPER



BS-115



BS-116



BS-117



BS-118



BS-119



BS-120

# BOTTLE OPENER



BO-121



BO-122



BO-123



BO-124



BO-125



BO-126



BO-127



BO-128



BO-129

# HAT CLIPS



HC-130



HC-131



HC-132



HC-133



HC-134



HC-135



HC-136



HC-137



HC-138



HC-139



HC-140



HC-141

# GOLF DIVOT TOOL



GD-142



GD-143



GD-144



GD-145



GD-146



GD-147



GD-148



GD-149



GD-150



GD-151



GD-152



GD-153



GD-154



GD-155

# GOLF BALLMARKERS



GB-156



GB-157



GB-158



GB-159



GB-160



GB-161



GB-162



GB-163

# GOLF BAG TAGS



GB-164



GB-165



GB-166



GB-167



GB-168



GB-169



GB-170



GB-171



GB-172

# METAL ASHTRAY



MA-173



MA-174



MA-175



MA-176



MA-177



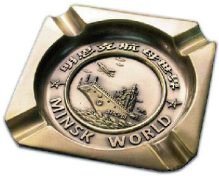
MA-178



MA-179



MA-180



MA-181



MA-182



MA-183



MA-184



MA-185



MA-186



MA-187



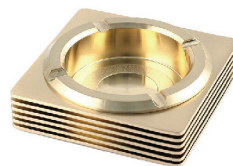
MA-188



MA-189



MA-190



MA-191



MA-192

# SOUVENIR SPOON



SP-193



SP-194



SP-195



SP-196



SP-197



SP-198



SP-199



SP-200



SP-201



SP-202



SP-203



SP-204



SP-205



SP-206



SP-207



SP-208



SP-209



SP-210



SP-211



SP-212

# MONEY CLIPS



MC-213



MC-214



MC-215



MC-216



MC-217



MC-218



MC-219



MC-220



MC-221



MC-222



MC-223

# BOOKMARKS



BO-224



BO-225



BO-226



BO-227



BO-228



BO-229



BO-230



BO-231



BO-232



BO-233



BO-234



BO-235



BO-236



BO-237

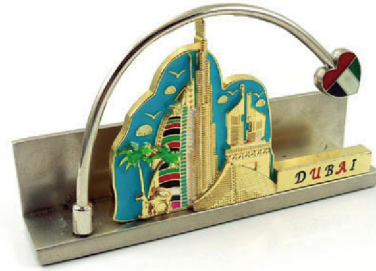


BO-238

# CARD HOLDER



CH-239



CH-240



CH-241



CH-242



CH-243



CH-244

# PEN HOLDERS



BP-245



BP-246



BP-247



BP-248



BP-249



BP-250

# LEATHER KEYCHAIN



LK-251



LK-252



LK-253



LK-254



LK-255



LK-256



LK-257



LK-258



LK-259



LK-260



LK-261



LK-262

# METAL KEYCHAIN



MK-263



MK-264



MK-265



MK-266



MK-267



MK-268



MK-269



MK-270



MK-271



MK-272



MK-273

# CAR EMBLEM/LABELS



CE-274



CE-275



CE-276



CE-277



CE-278



CE-279



CE-280



CE-281



CE-282



CE-283



CE-284



CE-285



CE-286



CE-287



CE-288



CE-289



CE-290



CE-291



CE-292



CE-293

# TROLLEY COIN



TC-294



TC-295



TC-296



TC-297



TC-298



TC-299



TC-300



TC-301



TC-302



TC-303



TC-304



TC-305



TC-306



TC-307



TC-308

# PATCHES



PA-309



PA-310



PA-311



PA-312



PA-313



PA-314

# FRIDGE MAGNETS



FM-315



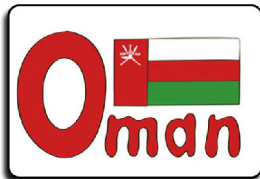
FM-316



FM-317



FM-318



FM-319



FM-320



FM-321



FM-322



FM-323



FM-324

# CHAMPIONSHIP RING



CR-325



CR-326



CR-327



CR-328



CR-329



CR-330



CR-331



CR-332



CR-333



CR-334



CR-335



CR-336



CR-337



CR-338

# BAG HANGERS



BH-339



BH-340



BH-341



BH-342



BH-343



BH-344



BH-345



BH-346



BH-347



BH-348

# PENDANTS



PE-349



PE-350



PE-351



PE-352



PE-353



PE-354



PE-355



PE-356



PE-357



PE-358



PE-359



PE-360

# CHARMS



CH-361



CH-362



CH-363



E-364



PE-365



PE-366



PE-367



PE-368



PE-369



PE-370



PE-371



PE-372

# BELT BUCKLE



BB-373



BB-374



BB-375



BB-376



BB-377



BB-378



BB-379



BB-380



BB-381



BB-382



BB-383



BB-384

# PVC PRODUCTS



PV-385



PV-386



PV-387



PV-388



PV-389



PV-390



PV-391



PV-392

# DECORATIONS



DE-393



DE-394



DE-395



DE-396



DE-397



DE-398



DE-399



DE-400

# SCARVES RING



SR-401



SR-402



SR-403



SR-404



SR-405



SR-406



SR-407



SR-408

# BUTTON BADGES



BB-409



BB-410



BB-411



BB-412



BB-413



BB-414



BB-415



BB-416



BB-417

# LED BADGES



LB-418



LB-419



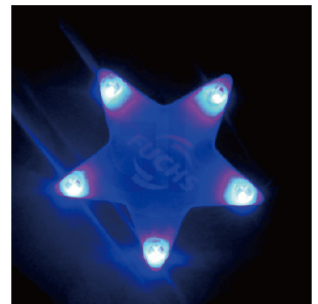
LB-420



LB-421



LB-422



LB-423



LB-424



LB-425



LB-426

# PAPERWEIGHTS



PA-427



PA-428



PA-429



PA-430



PA-431



PA-432



PA-433



PA-434

# SOUVENIR BELLS



SB-435



SB-436



SB-437



SB-438



SB-439



SB-440



SB-441



SB-442



SB-443

# CHRISTMAS ORNAMENTS



BB-444



BB-445



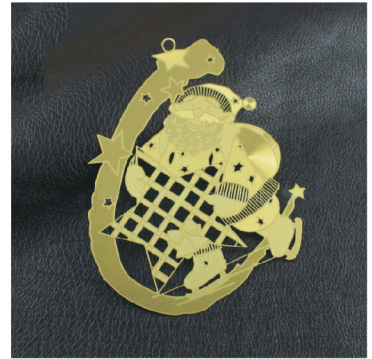
BB-446



BB-447



BB-448



BB-449



BB-450



BB-451



BB-452